

Cable hat

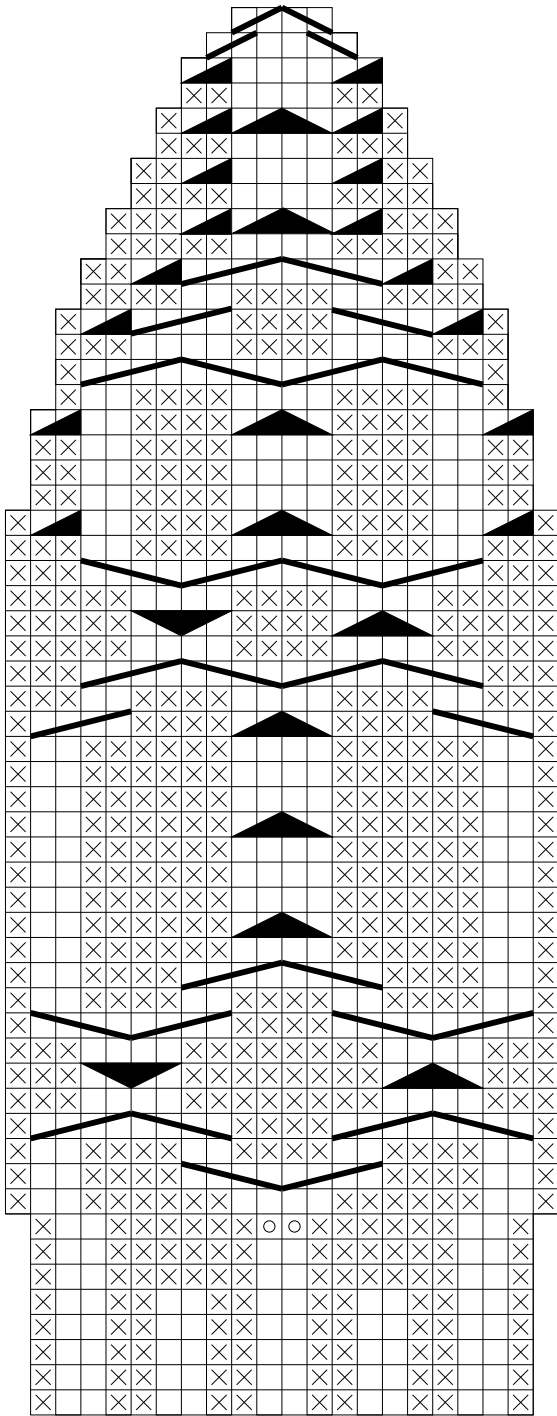
This hat with a cable pattern is made to go match the 117-13 Tunic with cable pattern on yoke by DROPS Design. The ribbing at the edge merges into the cables.







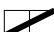
Materials: Approximately 104 g Drops Alaska yarn in desired color. Circular needle and double point needles size 5.5 mm, or size needed to get the correct gauge.

Gauge: 16 sts. × 20 rows in stockinette = 10×10 cm. With this gauge you will end up with a circumference of about 50 cm, but the hat will be quite stretchable, and fit nicely around heads with a 56 cm circumference.

Cast on 100 stitches. Join into a circle and knit 5 repetitions of the diagram on the next page. When you have finished, cut the yarn and pull the end through the remaining stitches. Darn in the ends. Make a pom-pom from whatever yarn you have left and attach it to the top. A diameter of about 8 cm will work well visually with the rest of the hat.





- K
- ⊗ P
- K one in the front and one in the back of the loop
-  slip 2 sts. on cable needle behind the piece, K2, P2 from cable needle
-  slip 2 sts. on cable needle in front of the piece, P2, K2 from cable needle
-  slip 2 sts. on cable needle behind the piece, K2, K2 from cable needle
-  slip 2 sts. on cable needle in front of the piece, K2, K2 from cable needle
-  purl two together
-  SSK
-  K2 together